



RBC Solactive Equal Weight US Semi Conductor Select CAD Hedged 2% AR Index Autocallable Barrier Accelerator Securities (CAD), **Series 22** Non-Principal Protected Security

5.0 year
term

Performance linked to the Solactive Equal Weight US Semi Conductor Select CAD Hedged 2% AR Index

65% protection
barrier level

Callable annually at 100% of Initial Index Level on July 16, 2027 and July 18, 2028.

Fundserv	Subscriptions Close	Issue Date	Maturity Date
RBC15947	on or about July 14, 2026	July 21, 2026	July 18, 2031

KEY TERMS

Issuer: Royal Bank of Canada

Issuer Credit Ratings: Moody's: Aa1; S&P: AA-; DBRS: AA

Currency: CAD

Minimum Investment: 10 Securities or \$1,000.

Term: Approximately 5.0 years

Principal at Risk: The Securities are not principal protected.

Underlying Index: The return on the Securities is linked to the performance of the Solactive Equal Weight US Semi Conductor Select CAD Hedged 2% AR Index (the "**Underlying Index**"). The Underlying Index is an adjusted return index that aims to track the gross total return performance of the Solactive Equal Weight US Semi Conductor Select GTR CAD Hedged Index (the "**Target Index**"), subject to a reduction of a synthetic dividend of 2.00% per annum (the "**Adjusted Return Factor**"). **For the avoidance of doubt, the return on the Securities is linked to the Underlying Index and is not linked to the Target Index.** The Closing Level on June 12, 2026 was 63,685.37. The Target Index is calculated in CAD and corresponds to the CAD-hedged version of the Solactive Equal Weight US Semi Conductor Select GTR Index (the "**U.S. Index**"). For the calculation of the level of the U.S. Index, any dividends or other distributions paid on the constituent securities of the U.S. Index are assumed to be reinvested across all of the constituent securities of the U.S. Index. As of June 12, 2026, the annual dividend yield on the U.S. Index was 0.562%, representing an aggregate dividend yield of approximately 2.842% compounded annually over the term of the Securities, on the assumption that the dividend yield remains constant.

Issue Date: July 21, 2026.

Initial Index Level: The Closing Level as published by the Index Sponsor on the Initial Valuation Date.

Initial Valuation Date: July 15, 2026.

Protection Barrier Level: 65.00% of the Initial Index Level.

A final base shelf prospectus containing important information relating to the securities described in this document has been filed with the securities regulatory authorities in each of the provinces and territories of Canada. The final base shelf prospectus, any applicable shelf prospectus supplement, the Pricing Supplement and any amendment to such documents are accessible through SEDAR+ at www.sedarplus.com. Copies of the documents may also be obtained from www.rbcnotes.com. This document does not provide full disclosure of all material facts relating to the securities offered. Investors should read the final base shelf prospectus, any applicable shelf prospectus supplement, the Pricing Supplement and any amendment to such documents for disclosure of those facts, especially risk factors relating to the securities offered, before making an investment decision.

Final Index Level:	The Closing Level as published by the Index Sponsor on the Final Valuation Date.
Final Valuation Date:	July 15, 2031.
Closing Level:	The official closing level of the Underlying Index as announced by the Index Sponsor for the relevant date, as determined by the Calculation Agent.
Maturity Date:	July 18, 2031.
Observation Dates:	The dates set out below under the heading "Observation Dates", provided that if any Observation Date is not an Exchange Day, such Observation Date will be the next following day that is an Exchange Day, subject to the occurrence of an Extraordinary Event.
Interest Payment Dates:	<p>The dates set out below under the heading "Interest Payment Dates", subject to the occurrence of an Extraordinary Event, and provided that (i) the Securities are not redeemed by the Bank as described below, and (ii) if any Interest Payment Date is not a Business Day, such Interest Payment Date will be the first following day that is a Business Day.</p> <p>For greater certainty, no Interest Payment will be made on any Interest Payment Date unless an Autocall Redemption Event occurred on the immediately preceding Observation Date.</p>
Autocall Redemption Event:	<p>If the Closing Level on an Observation Date is greater than or equal to 100.00% of the Initial Index Level (the "Autocall Redemption Level"), an Autocall Redemption Event will occur.</p> <p>Following the occurrence of an Autocall Redemption Event, the Securities will be redeemed for an amount equal to the Principal Amount thereof (the "Autocall Redemption Amount").</p> <p>RBC DS intends to publish whether there has been an Autocall Redemption Event on each Observation Date on its website at www.rbcnotes.com.</p>
Autocall Redemption Dates:	The dates set out below under the heading "Autocall Redemption Dates", subject to the occurrence of an Extraordinary Event and provided that if any Autocall Redemption Date is not a Business Day, such Autocall Redemption Date will be the first following day that is a Business Day.
Interest Payment:	<p>If an Autocall Redemption Event occurs, in addition to the Autocall Redemption Amount, an interest payment (the "Interest Payment") on the Securities will be payable on the Autocall Redemption Date, in arrears, as follows:</p> <p>(a) if an Autocall Redemption Event occurs on the first Observation Date, the Interest Payment payable per Security will be equal to the sum of (i) \$23.00 and (ii) if the Index Return exceeds \$23.00, $1.00\% \times (\text{Index Return} - \\$23.00)$; and</p> <p>(b) if an Autocall Redemption Event occurs on the second Observation Date, the Interest Payment payable per Security will be equal to the sum of (i) \$46.00 and (ii) if the Index Return exceeds \$46.00, $1.00\% \times (\text{Index Return} - \\$46.00)$.</p>
Participation Rate:	200.00%, applied only if the Index Return is positive
Payment at Maturity:	<p>If an Autocall Redemption Event has not previously occurred, the amount payable on the Maturity Date (the "Final Redemption Amount") for each Security will be determined as follows:</p> <p>(a) if the Final Index Level is greater than the Initial Index Level, $\\$100.00 + (\text{Participation Rate} \times \text{Index Return})$;</p> <p>(b) if the Final Index Level is greater than or equal to the Protection Barrier Level but less than the Initial Index Level, \$100.00; or</p> <p>(c) if the Final Index Level is less than the Protection Barrier Level, an amount equal to the Index Return, but in any event not less than \$1.00.</p> <p>As a result, the Final Redemption Amount will not be determinable before the Final Valuation Date.</p> <p>For greater certainty, there will be no duplication in calculating an Autocall Redemption Amount and the Final Redemption Amount.</p>
Index Return:	<p>(i) For the purpose of calculating the Final Redemption Amount, $\\$100.00 \times (X_f / X_i)$, and (ii) for all other purposes, $((X_f / X_i) - 1) \times \\100.00,</p> <p>where:</p> <p>"X_f" means the Final Index Level, and</p> <p>"X_i" means the Initial Index Level.</p>
Secondary Market:	<p>Fundserv, RBC15947</p> <p>Generally, to be effective on a Business Day, a redemption request will need to be initiated by 2:00 p.m. (Toronto time) on that Business Day (or such other time as may be established by Fundserv). Any request received after such time will be deemed to be a request sent and received on the next following Business Day.</p>

**Early Trading Charge
Schedule:**

**If Sold Within the Following
No. of Days from Issue Date**

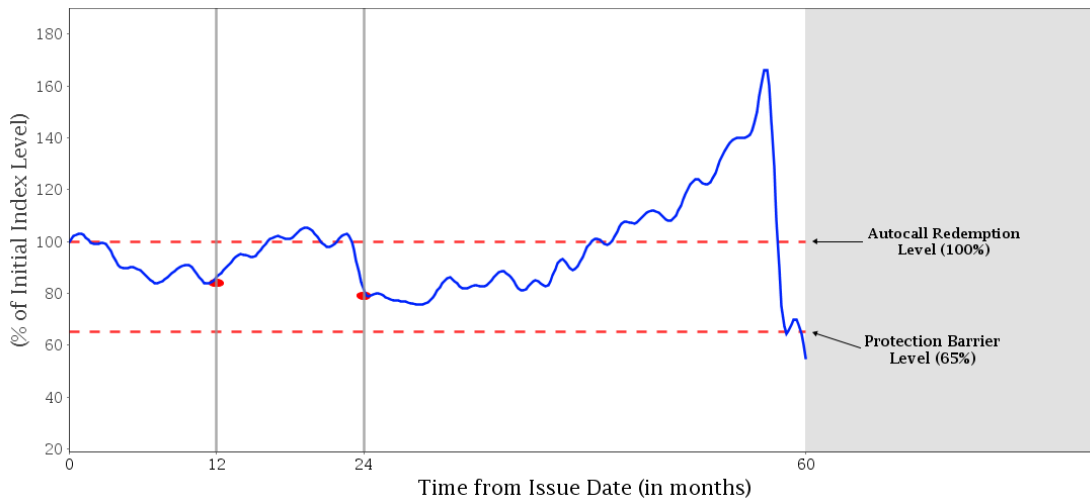
**Early Trading Charge
(% of Principal Amount)**

1 - 60 days	3.00%
61 - 120 days	2.00%
121 - 180 days	1.00%
Thereafter	Nil

SAMPLE CALCULATIONS

The following examples show how the return on the Securities would be calculated under different scenarios. These examples are included for illustration purposes only. The performance of the Underlying Index used in the examples is not an estimate or forecast of the performance of the Underlying Index or the Securities. The actual performance of the Underlying Index and the Securities will be different from these examples and the differences may be material. All examples below assume that a holder of the Securities has purchased Securities with an aggregate Principal Amount of \$100.00 and that no Extraordinary Event has occurred. For convenience, each vertical line in the charts below represents both a hypothetical Observation Date and the applicable Autocall Redemption Date. Where applicable, dollar amounts shown below are rounded to the nearest whole cent for ease of reading, but the amount(s) payable to an investor per Security may reflect more decimal places.

Example #1 — Loss Scenario with Payment on the Maturity Date at Less Than the Principal Amount



- Indicates Observation Dates on which the Autocall Redemption Level is not breached; therefore no Interest Payment will occur on the related Interest Payment Date.
- Closing Level of the Underlying Index

In this scenario, the Closing Level is below the Autocall Redemption Level on all Observation Dates, so the Securities would not be redeemed before the Maturity Date. On the Final Valuation Date, the Final Index Level is below the Protection Barrier Level.

(i) Interest Payment

No Autocall Redemption Event occurs because the Closing Level at each Observation Date is below the Autocall Redemption Level. Therefore, an Interest Payment would not be payable on any Interest Payment Date.

(ii) Final Redemption Amount

In this example, the Initial Index Level (X_i) is 63,685.37 and the Final Index Level (X_f) is 35,026.95. Therefore, the Final Redemption Amount is as follows:

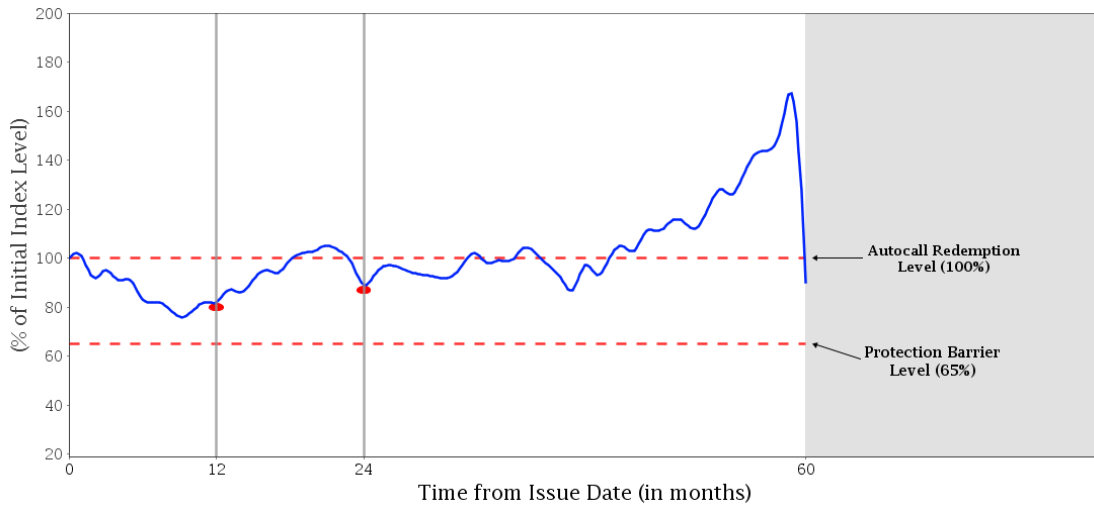
$$\begin{aligned} & \$100.00 \times (X_f / X_i) \\ & \$100.00 \times (35,026.95 / 63,685.37) = \$55.00 \end{aligned}$$

Therefore, the total amounts payable per Security from the Issue Date to the Maturity Date are:

- (a) Interest Payment: \$0.00
- (b) Final Redemption Amount: \$55.00
- (c) Total amount paid over the term of the Securities: \$55.00

The equivalent annually compounded rate of return in this example is -11.27%.

Example #2 — Scenario with Payment on the Maturity Date at the Principal Amount



- Indicates Observation Dates on which the Autocall Redemption Level is not breached; therefore no Interest Payment will occur on the related Interest Payment Date.
- Closing Level of the Underlying Index

In this scenario, the Closing Level is below the Autocall Redemption Level on all Observation Dates, so the Securities would not be redeemed before the Maturity Date. On the Final Valuation Date, the Final Index Level is at or above the Protection Barrier Level but is below the Autocall Redemption Level.

(i) Interest Payment

No Autocall Redemption Event occurs because the Closing Level at each Observation Date is below the Autocall Redemption Level. Therefore, an Interest Payment would not be payable on any Interest Payment Date.

(ii) Final Redemption Amount

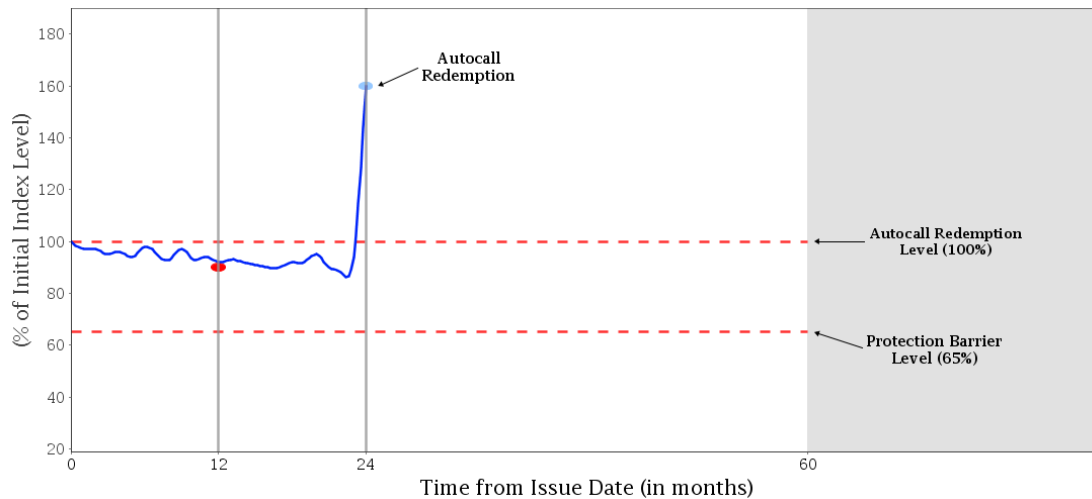
In this example, the Final Index Level is greater than or equal to the Protection Barrier Level. Therefore, the Final Redemption Amount is \$100.00.

Therefore, the total amounts payable per Security from the Issue Date to the Maturity Date are:

- (a) Interest Payment: \$0.00
- (b) Final Redemption Amount: \$100.00
- (c) Total amount paid over the term of the Securities: \$100.00

The equivalent annually compounded rate of return in this example is 0.00%.

Example #3 — Gain Scenario with Autocall Redemption Event



- Indicates Observation Date on which the Autocall Redemption Level is exceeded.
- Indicates Observation Dates on which the Autocall Redemption Level is not breached; therefore no Interest Payment will occur on the related Interest Payment Date.
- Closing Level of the Underlying Index

In this scenario, the Closing Level is at or above the Autocall Redemption Level on the Observation Date that falls 24 months into the term of the Securities. This would constitute an Autocall Redemption Event and the Bank would redeem the Securities on the applicable Autocall Redemption Date. An Interest Payment would be payable on the second Interest Payment Date.

(i) Interest Payment

In this example, the Initial Index Level (X_i) is 63,685.37 and the Closing Level on the second Observation Date (X_f) is 101,896.59; therefore, there is an Autocall Redemption Event on the second Observation Date. On the first Observation Date, no Autocall Redemption Event would occur because the Closing Level at such Observation Date is below the Autocall Redemption Level. Therefore, the Interest Payment payable on the Autocall Redemption Date would be calculated as follows:

The Index Return is calculated as follows:

$$\begin{aligned} & ((X_f / X_i) - 1) \times \$100.00 \\ & ((101,896.59 / 63,685.37) - 1) \times \$100.00 = \$60.00 \end{aligned}$$

Since the Index Return is greater than \$46.00, the Interest Payment is:

$$\begin{aligned} & \$46.00 + [1.00\% \times (\text{Index Return} - \$46.00)] \\ & \$46.00 + [1.00\% \times (\$60.00 - \$46.00)] = \$46.14 \end{aligned}$$

(ii) Autocall Redemption Amount

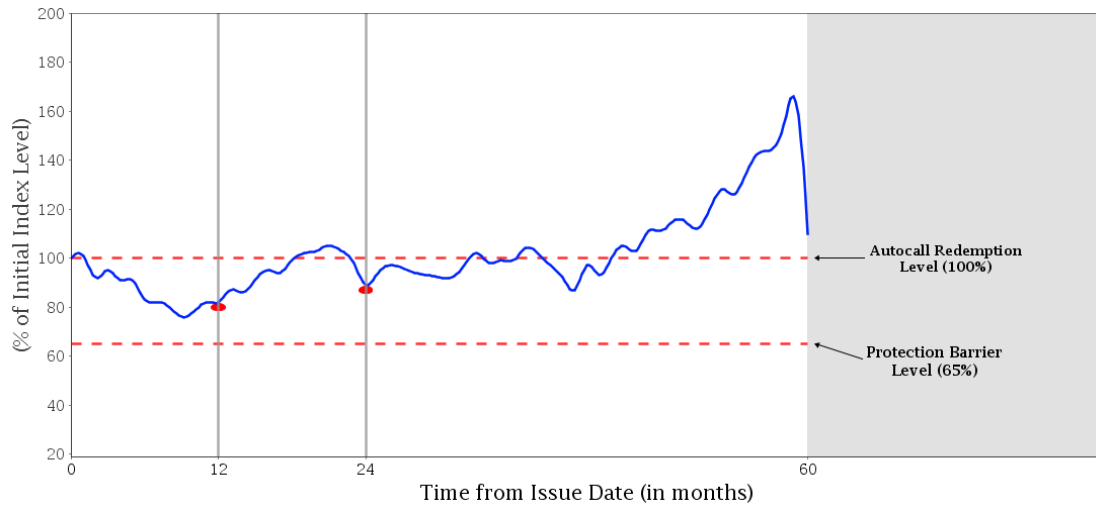
The Autocall Redemption Amount per Security is equal to \$100.00.

Therefore, the total amounts payable per Security from the Issue Date to the Autocall Redemption Date are:

- (a) Interest Payment: \$46.14
- (b) Autocall Redemption Amount: \$100.00
- (c) Total amount paid over the term of the Securities: \$146.14

The equivalent annually compounded rate of return in this example is 20.89%.

Example #4 — Gain Scenario on Maturity Date



- Indicates Observation Dates on which the Autocall Redemption Level is not breached; therefore there is no Autocall Redemption Event and no Interest Payment will occur on the related Interest Payment Date.
- Closing Level of the Underlying Index

In this scenario, the Closing Level is below the Autocall Redemption Level on all Observation Dates, so the Securities would not be redeemed prior to maturity and no Autocall Redemption Amount or Interest Payment would be payable.

In this example, the Initial Index Level (X_i) is 63,685.37 and the Final Index Level (X_f) is 70,053.91; therefore, the Final Redemption Amount would be calculated as follows:

The Index Return is calculated as follows:

$$\begin{aligned} & ((X_f / X_i) - 1) \times \$100.00 \\ & ((70,053.91 / 63,685.37) - 1) \times \$100.00 = \$10.00 \end{aligned}$$

Since the Index Return is positive, the Final Redemption Amount is:

$$\begin{aligned} & \$100.00 + (\text{Participation Rate} \times \text{Index Return}) \\ & \$100.00 + (200.00\% \times \$10.00) = \$120.00 \end{aligned}$$

The equivalent annually compounded rate of return in this example is 3.71%.

INFORMATION REGARDING THE OBSERVATION DATES, INTEREST PAYMENT DATES AND AUTOCALL REDEMPTION DATES:

Observation Dates	Interest Payment Dates	Autocall Redemption Dates
July 16, 2027	July 21, 2027	July 21, 2027
July 18, 2028	July 21, 2028	July 21, 2028

The Underlying Index is calculated and published by Solactive AG ("**Solactive**"), and the name "**Solactive**" is a registered trademark of Solactive. The Underlying Index has been licensed for use by the Bank in connection with the Securities. The Securities are not sponsored, promoted, sold or supported in any other manner by Solactive and Solactive makes no representation or warranty, express or implied, regarding the advisability of investing in securities generally or the Securities in particular. Solactive does not guarantee the accuracy or completeness of the Underlying Index or the Target Index, any data included therein, or any data from which it is derived, nor has any liability for any errors, omissions, or interruptions therein.

All capitalized terms unless otherwise defined have the meanings ascribed to them in the Pricing Supplement.

Clients should evaluate the financial, market, legal, regulatory, credit, tax and accounting risks and consequences of the proposal before entering into any transaction, or purchasing any instrument. Clients should evaluate such risks and consequences independently of Royal Bank of Canada and the Dealers, RBC Dominion Securities Inc. ("**RBC DS**") and CIBC World Markets Inc., respectively. RBC DS is a wholly-owned subsidiary of the Bank. Consequently, the Bank is a related and connected issuer of RBC DS within the meaning of applicable securities legislation.

The Securities will not constitute deposits insured under the *Canada Deposit Insurance Corporation Act* or any other deposit insurance regime. The Securities are not fixed income securities and are not designed to be alternatives to fixed income or money market instruments.

An investment in the Securities involves risks. None of Royal Bank of Canada, the Dealers or any of their respective affiliates, associates, or any other person or entity guarantees that holders of Securities will receive an amount equal to their original investment in the Securities or guarantees that any return will be paid on the Securities (subject to the minimum amount payable at maturity of \$1.00 per Security) at or prior to maturity of the Securities. See "Risk Factors" in the base shelf prospectus and "Risk Factors" in the Pricing Supplement. Since the Securities are not principal protected and the Principal Amount will be at risk, you could lose substantially all of your investment.

® Registered trademark of Royal Bank of Canada